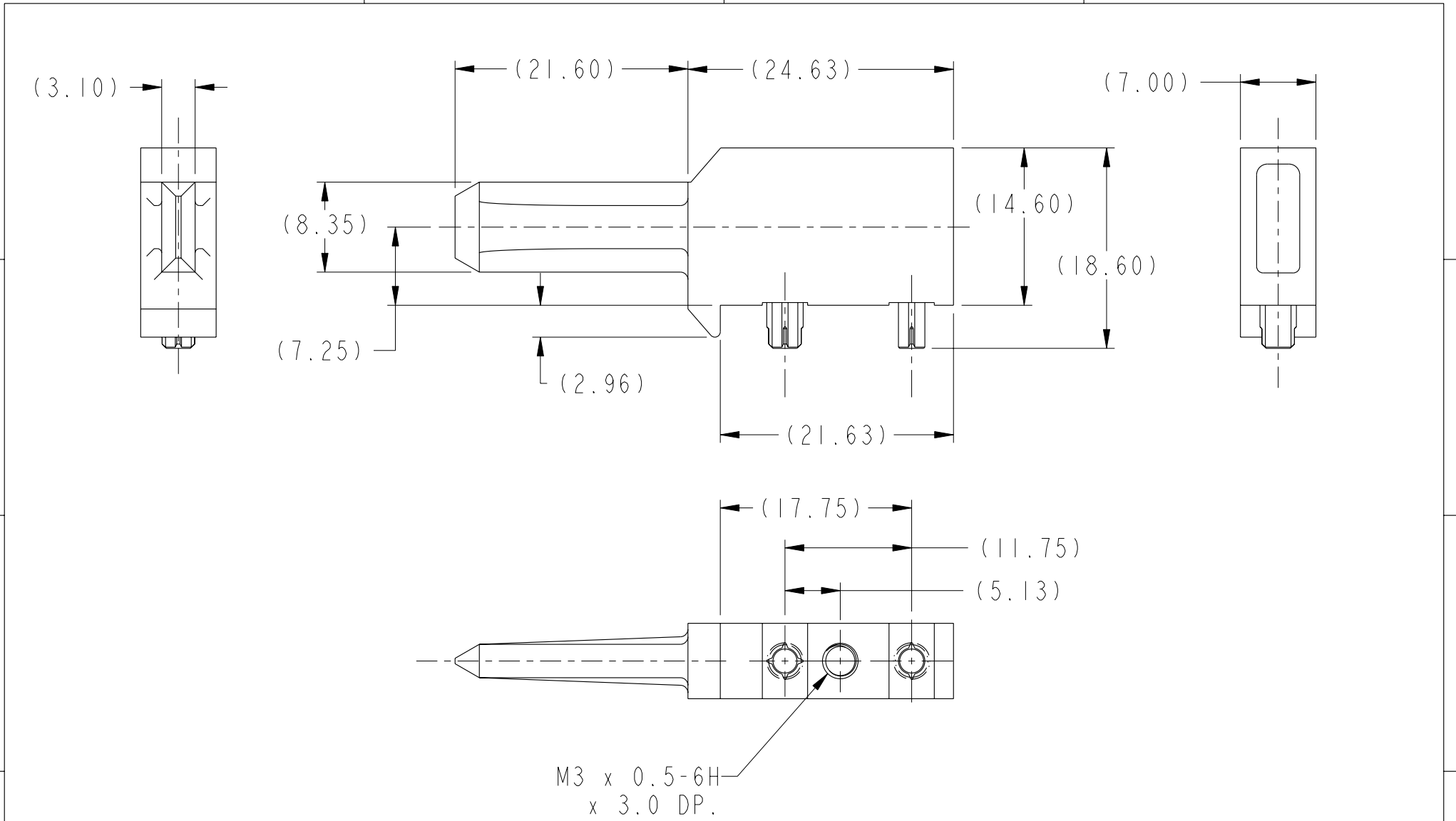




Copyright FCI.



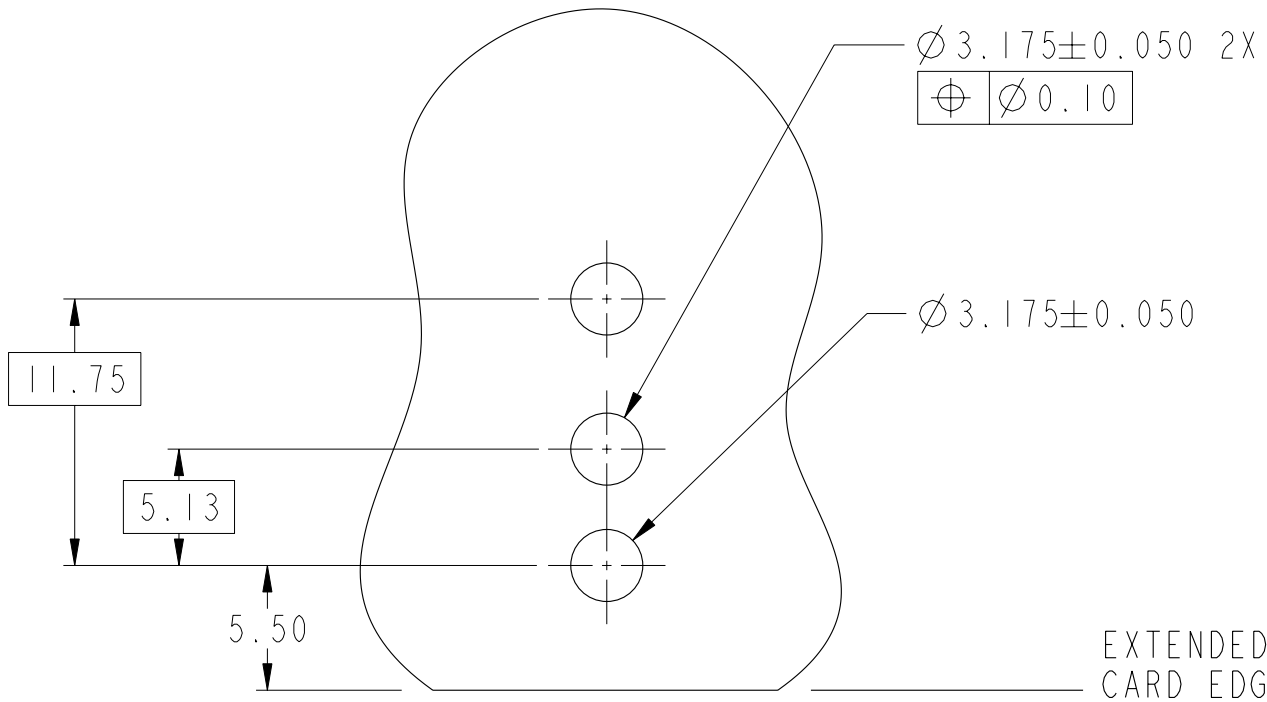
rev	ecn no	dr	date
A	V05-0557	AR	2005-06-07
B	S08-0056	CH	2008-06-02
-	-	-	-
-	-	-	-
-	-	-	-
-	-	-	-

www.fciconnect.com		surface - ✓	tolerance std ASME Y14.5 -	projection	mm
		TOLERANCES UNLESS OTHERWISE SPECIFIED			Scale 2:1
Dr	T. HOUTZ	2004-12-15	ANGULAR	0.X ±	size A4
Eng	H. NGO	2004-12-15	LINEAR	0.XX ±	ECN ***
Chr	C. H. TAN	2008-06-04	0° ±°	0.XXX ±	Spec ref
Appr	JOEY NG	2008-06-04	Product Affairs ACCESSORIES		
		7.2mm R/A GUIDE PIN		dwg no 10044314	Rev. B
		4/5 Pr.		CUSTOMER	sheet 1 of 2
		catalog no -			

REV F - 2006-04-17

PART NUMBER

10044314-101LF



RECOMMENDED PCB LAYOUT

SCALE 3:1

SEE NOTE 3, 4, & 5

NOTES:

- ① MATERIAL: ZINC ALLOY.
- ② FINISH: ZINC YELLOW CHROMATE.
- ③ APPLICATION SPECIFICATION: GS-20-045.
- ④ REFER TO CUSTOMER DRAWING 10035911 FOR INFORMATION REGARDING PCB LAYOUT OF POWER AND GUIDE MODULES RELATIVE TO SIGNAL MODULES.
- ⑤ RIGHT ANGLE PIN MODULE HAS THE SAME PCB FOOTPRINT AS THE RIGHT ANGLE GUIDE SOCKET.
- 6 THIS PRODUCT MEETS EUROPEAN UNION DIRECTIVES AND OTHER COUNTRY REGULATIONS AS DESCRIBED IN GS-22-008.
- 7 PACKAGING MEETS GS-14-920 LEAD FREE LABELING SPECIFICATION.



Copyright FCI.

	title	7.2mm R/A GUIDE PIN	dwg no	10044314	Rev.	B
	4/5 Pr.					
	catalog no	-	CUSTOMER	sheet 2 of 2		